

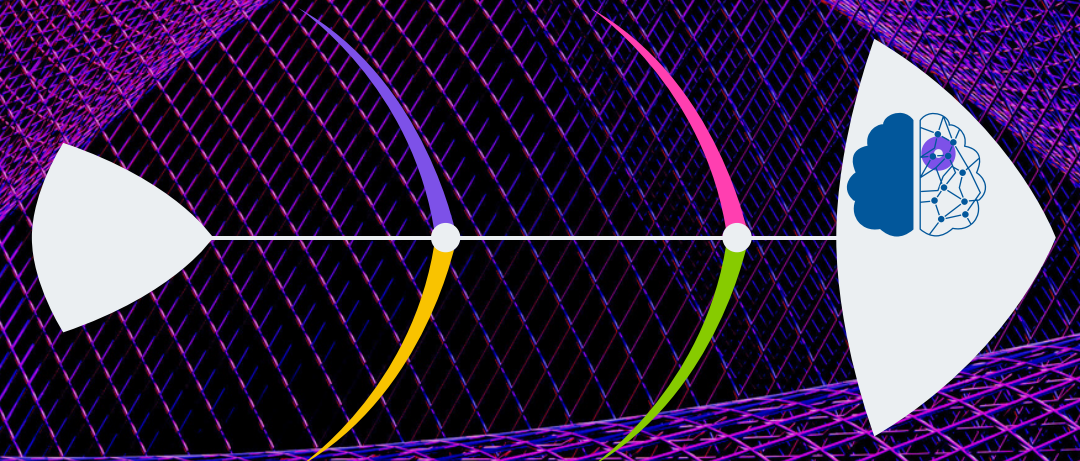


OVERVIEW & USE CASES

AI-powered Visual Root Cause Analysis *for Higher Efficiency, Productivity, and Reliability*

Julie Basu, CS PhD (Stanford)
Founder, CEO

JULY 9, 2023



Quote

*"Identify the root cause,
and the solution will reveal itself."*

AGENDA

- What is Root Cause Analysis (RCA, RCCA)
- Difficulties and inefficiencies
- Our patented innovation: *smart* Fishbones
 - Visual collaborative analysis
 - AI-powered recommendations
- Benefits
- Use cases

www.prosolvr.tech

prosolvr.tech/launch.html

linkedin.com/company/prosolvr

What is Root Cause Analysis (RCA, RCCA)

Goals: Improve quality and increase reliability of products and operations



360° view of a problem

- Define the problem
- Collect evidence (symptoms)
- Identify the root cause(s) with in-depth analysis
- Take containment measures and corrective actions
- Prevent problem recurrence
- *Learn from the experience!*

COMPREHENSIVE
COLLABORATIVE
EVIDENCE-BASED

Difficulties & Inefficiencies

1

Complexity

Linear RCA tools do not scale

2

Collaboration

Distributed teams are tough to coordinate

3

Knowledge churn

Experts leave and knowledge is lost

4

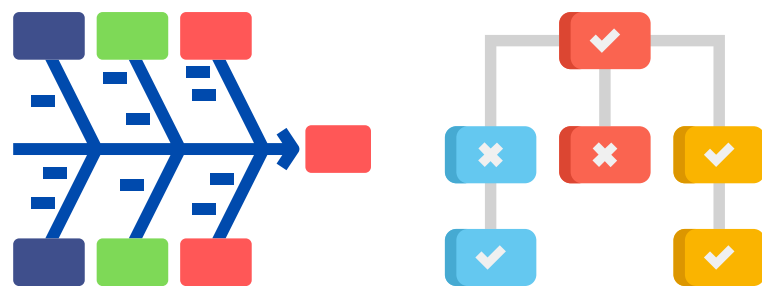
Manual learning

Information is hard to search, read and apply

Our patented innovation: *Smart* Fishbones

Visual maps

- Structured fishbone and tree of causes with layered views
- Organized data and evidence
- Fault status tracking
- Collaborative analysis
- Mix-and-match templates



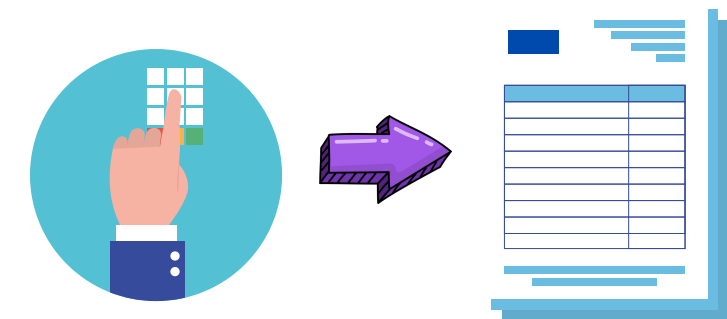
AI-powered insights

- Solved issues go in RCA Vault
- Interprets visual maps
- Symptom-driven matching
- Aggregated recommendations
- Template suggestions
- Chat GPT - coming soon!

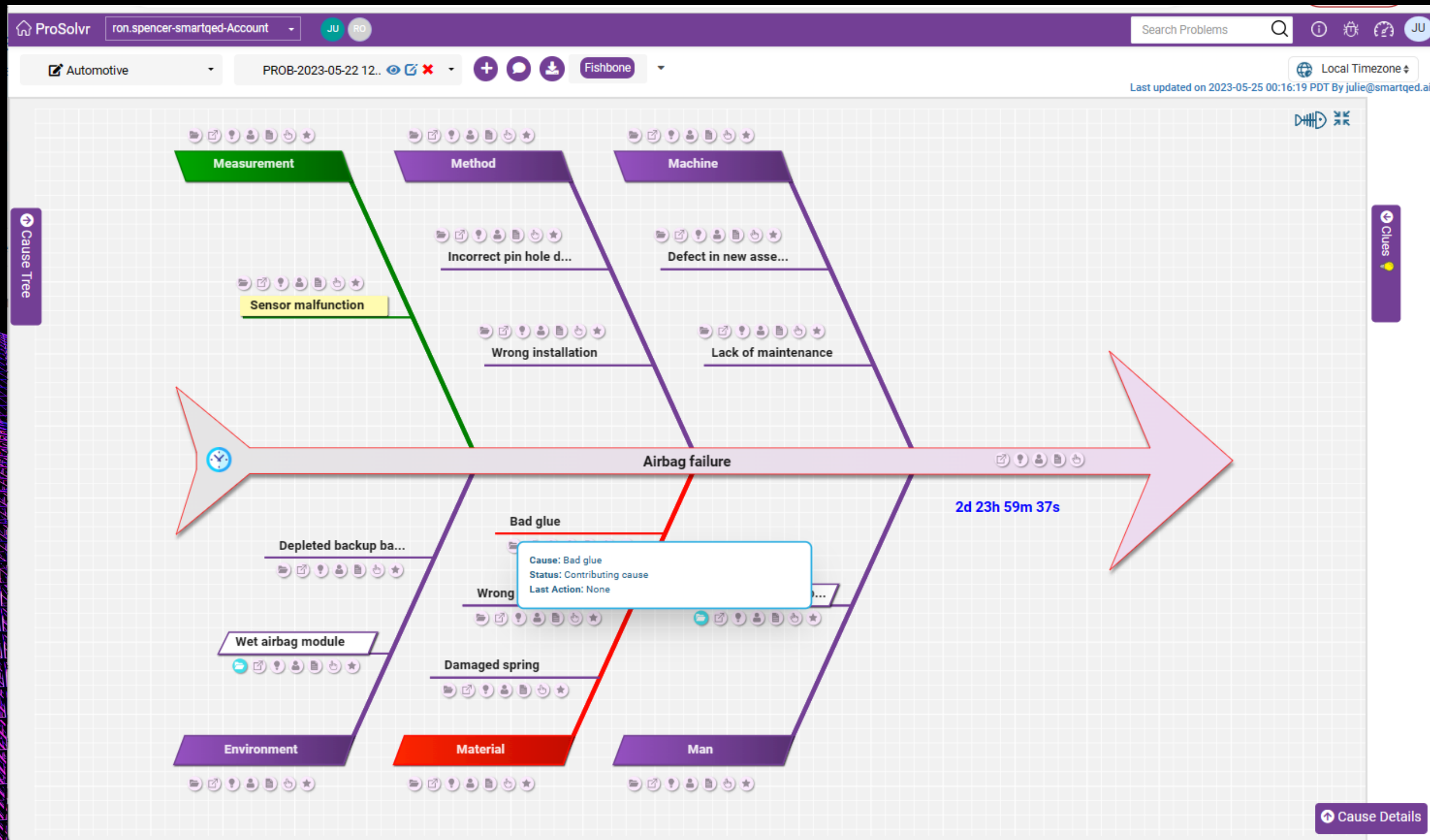


Automated reports

- 1-click manual downloads
- Automated periodic emailing based on problem priority
- Summary/detailed PDF reports
- 8D reports in Excel format
- Customizable

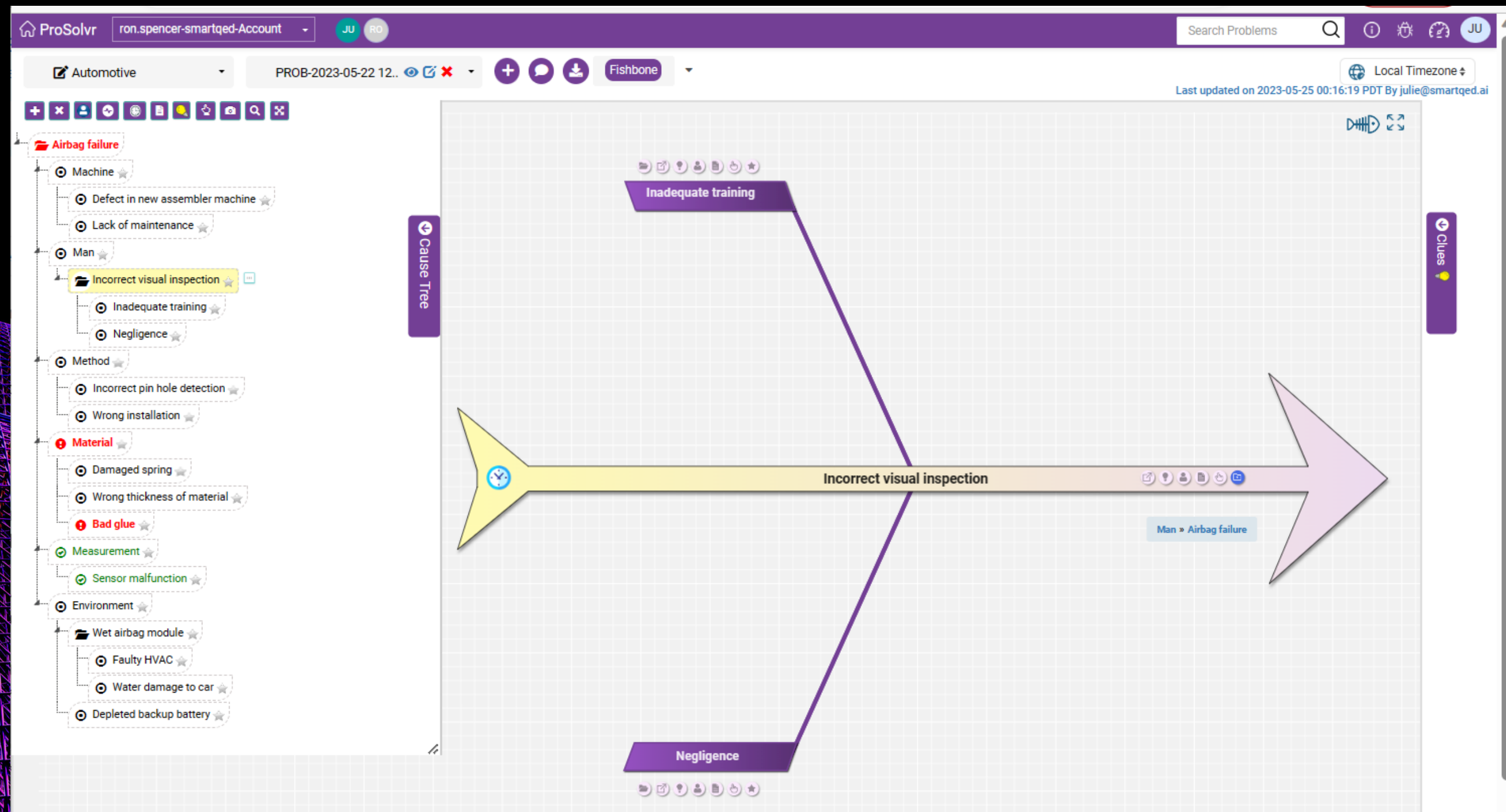


Smart Fishbone for Airbag Failure problem

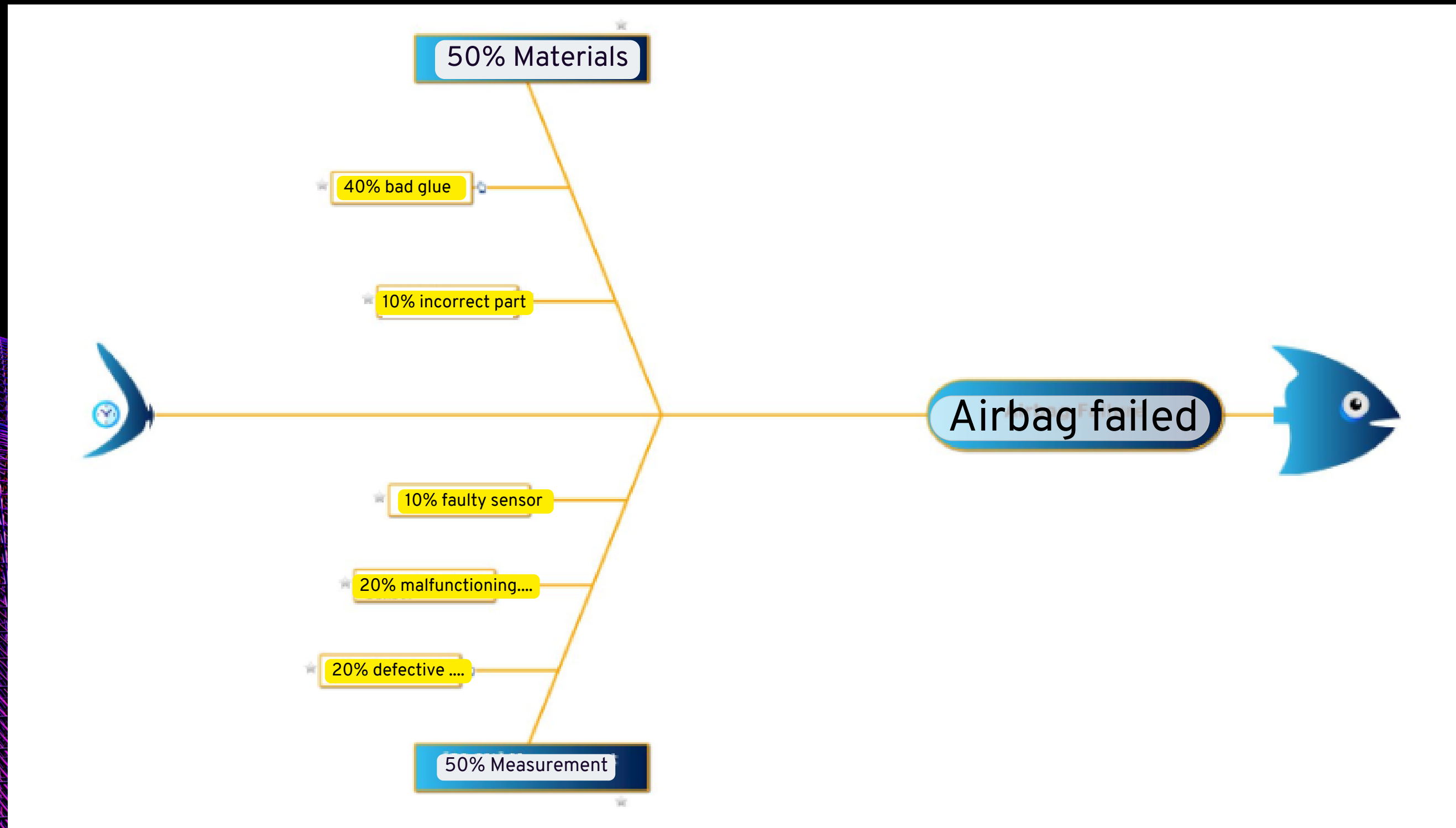


Cause Tree for full view
with navigation

Nested view



Aggregate Fishbone Suggestion based on analysis of RCA vault



Benefits

SCALABLE



Easily scalable to RCA of complex problems with large teams - all are on the same page

AUTOMATED



Automated reporting & knowledge capture with AI-powered insights slashes tedious work & training time

EFFICIENT



Higher efficiency, productivity, quality & reliability leads to happier customers



Use Cases

MANUFACTURING

Investigate defects or failures of products and components during design & development as well as in operation

EXAMPLES

- Defective component
- Incompatible design

Use Cases

MAINTENANCE

Analyze failures in maintenance processes to identify true root causes and prevent problem recurrence

EXAMPLES

- Leakage
- Compliance failure

Use Cases

ACCIDENTS & INCIDENTS

In-depth investigation and root cause analysis of accidents & incidents with tracking of corrective and preventive actions (CAPA)

EXAMPLES

- Car crash
- Aircraft Runway incursion

Use Cases

IT /
CYBERSECURITY

Complex cross-functional software problem analysis by distributed teams,
with in-depth investigations and clear reporting

EXAMPLES

- System outages
- Hacker attacks

Use Cases

WORK SAFETY

Investigate injuries and adverse incidents
in factories and work places

EXAMPLES

- Worker injury - slips and falls
- Mishandling of hazardous materials

Use Cases

BUSINESS OPERATIONS

For root cause analysis of complex issues
in business operations or financial systems

EXAMPLES

- Delivery delays / missed deadline
- Supply chain vulnerability

and many more ...

Testimonial

*"There is an urgent need of such a VISUAL tool
in the area of Problem solving, Knowledge analysis and
Incident management.
This innovative tool serves a greater purpose."*

Phaniendra Somraj

Process Improvement expert, Lean Six Sigma Master Black Belt

CONTACT

www.prosolvr.tech



info@prosolvr.tech



linkedin.com/company/prosolvr



Follow us!

prosolvvr.tech

"Success lies not in finding quick fixes for symptoms, but in uncovering the true causes and addressing them with corrective action."

THANK YOU